

WINGSPREAD

Retreat & Executive Conference Center

Team Building and Local Activities





Whether you're looking to strengthen communication, boost collaboration, or spark creativity, our diverse range of team-building activities are designed to help your team thrive. From exciting scavenger hunts and outdoor challenges to hands-on workshops and problem-solving exercises, each experience is crafted to encourage trust, teamwork, and innovative thinking.

These activities not only promote teamwork but also create lasting memories and inspire new ways of working together.

Let us help you create an experience that will elevate your team's performance and bring out the best in each team member.





Ice Breakers

Wingspread staff facilitates our ice breaker activities to bring groups closer together while making lasting connections and memories.

MASTER OF PUPPETS:

The group will split into two teams. Each team will attempt to assemble a puzzle before the time runs out. The first team to complete the puzzle wins.

This activity fosters good communication skills and teamwork.

15-20 minute duration, depending on the size of the group

THE WHOLE WORLD IN YOUR HANDS:

Teamwork is the foundation of success! In this challenge, the group will hone their skills by working together using sticks to pick up and transport a globe to the designated area without dropping it.

If the world falls, the group must return to the starting position and try again before the time runs out.

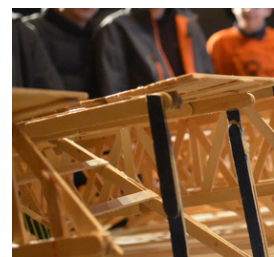
This activity builds communication skills, teamwork, and synchronicity.

15-20 minute duration, depending on the size of the group

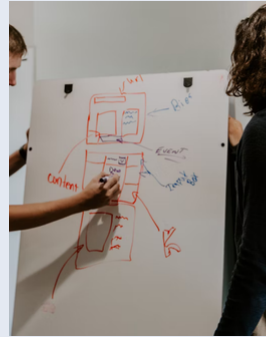
WHY DID THE CHICKEN CROSS THE ROAD

The group will break into two teams. Each team must create one half of a bridge using popsicle sticks, tape, and cardboard, with the ultimate goal being to bring the two halves together to create a functioning bridge for our chicken to cross. This activity fosters communication skills and builds stronger connections.

30-60 minute duration, depending on the size of the group



Pricing does not include applicable sales tax.
Prices are subject to change without notice.



AIR LIFT TOWER

For this challenge your group will split into two teams and face off to see who's team can build a cup tower the fastest...using only the air in a balloon to transport and stack the cups! This challenge fosters coordination and effective communication amongst colleagues. 30-60 minute duration, depending on the size of the group

KARAOKE CLUB

One of the best ways to break the ice and unite people is music! There is no better way to share this with your team than a classic karaoke experience, including Microphone and stand, user-friendly karaoke software, and performance lighting to make it feel like you're the star. \$5 per person

BIRDBOX Pictionary

The ultimate test of communication! In this challenge, the group will split into two teams and face off in a spin on a family game night classic. Your team will pick a group member to draw blindfolded while the remaining members guess what the drawing is. Each team will work through a list of words simultaneously; the first team to work through their list wins. 30-60 minute duration, depending on the size of the group



Pricing does not include applicable sales tax.
Prices are subject to change without notice.



Solstice Activities

One of the perks of being located in Wisconsin is the chance to experience all four seasons. Embracing the mesmerizing color palettes of fall, the glistening breeze of drifting snow in the winter, the blooming breath of spring, and the warm comforts of summer, you'll find magic whenever you join us. This section includes our options for team-building exercises specific to the seasons.

SUMMER OLYMPICS - SUMMER

In this challenge, the group will break into teams to compete against each other in a 3-part Olympic relay race! The competition consists of 3 challenges centered around physical endurance, mental puzzles, teamwork, and communication.

Suggested Group Size: 20 or less

Price: \$10 per person

Time Frame: 1-2 Hours

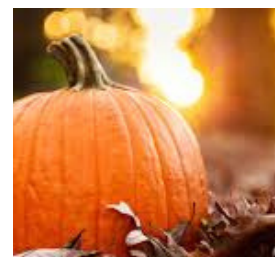
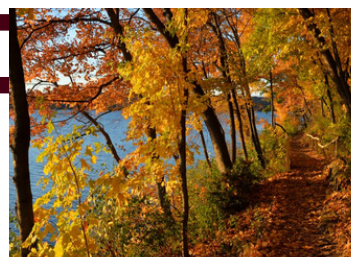
FALL...IN LOVE WITH WISCONSIN - AUTUMN

Fall is one of Wisconsin's most beautiful times during the year. With the ever-changing colors of the leaves and the warmth of cider by a fire, we hope to share some of the magic of Autumn in Wisconsin with you. During this activity, the group will convene around our beautiful fire pit to carve and decorate pumpkins and enjoy delicious ciders, hot chocolates, and fall treats.

Suggested group size: Any size group

Price: \$20 per person

Time Frame: 20- 30 minutes



Pricing does not include applicable sales tax.
Prices are subject to change without notice.



IN THE ICE OF THE BEHOLDER - WINTER

In this challenge, the group will divide into two teams. The teams will be given an object. The two teams must recreate the object using snow. The team whose snow sculpture resembles the object the most wins the contest.

Suggested Group Size: 20 or less

Price: \$10 per person

Time Frame: 1 Hour

SOUNDGARDEN - SPRING

For this fun, relaxing expression of creativity and peace, your group will come together to indulge in cocktails or mocktails, and learn the art of floral arrangements. You will have the necessary materials and instruction to create a beautiful keepsake to commemorate your time with us.

Suggested group size: 20 or less

Price: Ask for pricing

Time Frame: 1 Hour



Pricing does not include applicable sales tax.
Prices are subject to change without notice.



Home Away From Home

Community based activities focused on the local community and environment.

DAY ON THE SHORE

For this event, which is full of fun in the sun, the group will venture out to the beautiful shoreline of Lake Michigan for a day of food, sun, and bettering the community. The group will walk the picturesque shoreline, collecting garbage, and then on to a beach-themed picnic and games.

Suggested Group Size: Any

Price: \$25 per person

Time Frame: 1 Hour

FULL HEARTS = FULL STOMACHS

The Homeless Assistance Leadership Organization, also known as HALO, and The Veterans Outreach of Wisconsin have assisted in sheltering, feeding, and offering an opportunity to each person to begin their journey from dependency towards self-sufficiency. The group will prepare dinner as a donation to the shelter, alongside our chef using intricate and exciting recipes.

Ask for pricing

HOLIDAY COOKIE DECORATING

Come together as a group to decorate Heartwarming holiday treats to be shared amongst your team or donated to our local shelters to share some holiday cheer with the community.

Suggested Group Size: Any

Price: \$10 per person

Time Frame: 1 Hour



Pricing does not include applicable sales tax. Prices are subject to change without notice.



Wingspread Experiences

The following activities focus on the grounds of Wingspread. These events aim to cater to a relaxing atmosphere and luxurious environment.

CASINO ROYALE

Are you ready for a night of cards, dice, and excitement? With help from our friends at Classic Casino, we invite you to enjoy a night of mingling, pressure-free gambling, and cocktails. Your team will have a night they won't forget in the casino energy. This activity is a great fundraiser platform as well.

Suggested Group Size: 15 or less

Price: Ask for pricing and bar packages to elevate your casino experience.

Time Frame: 2-3 Hours.

SOUL SALUTATION

The scenery alone is enough to put you into a state of relaxation, with the direction of our esteemed local instructors. You are guided through various yoga poses ranging from intermediate to advanced, focusing on building core strength and endurance. The group can do this activity inside or outside on our awe-striking grounds.

Suggested group size: 10-15 People

Price: Ask for pricing

Time Frame: 1 Hour

PROSECCO AND PICASSOS

The creative possibilities are endless when you combine creativity and wine. For this activity, a local artist will guide you through painting a masterpiece while enjoying the relaxing atmosphere.

Suggested group size: 20 or less

Price: \$40 per person (a la carte bar pricing applies)

Time Frame: 2 Hours



Pricing does not include applicable sales tax. Prices are subject to change without notice.



NATURE'S KITCHEN

Join us for an outdoor cooking class over a fire pit or gas grill. Learn the culinary challenges of preparing a meal outdoors. Our Chef will guide the teams to create their dry meat rubs and experience the unique art of grilling.

Suggested group size: 15 or less

Price: \$83.25 Per person

Time Frame: 1-2 Hours

PALATE CHALLENGE

Test your palate in this fun and interactive challenge. Teams or individuals can step up to be blindfolded and taste various everyday foods to see who can identify the most correctly. This activity is great as part of an existing reception.

Suggested group size: 40 or less

Price: \$8.75 Per person

Time Frame: 1 Hour

WISCONSIN TAILGATE EXPERIENCE

If you're not from Wisconsin, you've heard of our legendary tailgate parties. With this event, we welcome you into the experience and atmosphere our passionate and adoring sports fans created. Our chefs will grill out on the patio serving up hot and juicy brats and hamburgers, all while you enjoy one of many craft beers Wisconsin has to offer and indulge in yard games such as cornhole, giant Jenga, and more.

Suggested group size: Available for all size groups

Price: \$67.75 Per Person

Time Frame: 1-2 Hours



Pricing does not include applicable sales tax. Prices are subject to change without notice.

WINDPOINT PIZZA PARTY

Everyone loves a classic pizza party. The only thing that could improve it is creating and customizing your own handmade pizzas! Come together as a group to make some delicious pizzas to be enjoyed amongst colleges or donate to our local shelter to provide meals to those in need.

Suggested group size: 10-15 People

Price: \$20 per person

Time Frame: 1- 2 Hour

MIXOLOGY MIXER

Teams can have fun creating a signature cocktail under the direction of our master mixologist. The teams will have many ingredients to choose from, and then each team will present their creation to the other teams to see who is the best!

Suggested Group Size: 40 or less

Price: \$37.00 Per Person

Time Frame: 1 Hour



Pricing does not include applicable sales tax.
Prices are subject to change without notice.



TAPAS FOR ALL, ALL FOR TAPAS

Have fun creating different Tapas to enjoy during your reception. Split your group into multiple teams, work together to make a recipe you haven't made before, and compete to bring home the Wingspread culinary medal.

Suggested group size: 20 or less

Price: \$55.50 Per person

Time Frame: 1-2 Hours

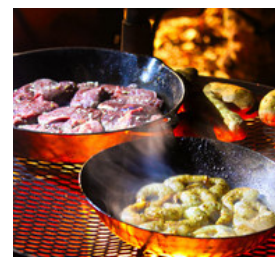
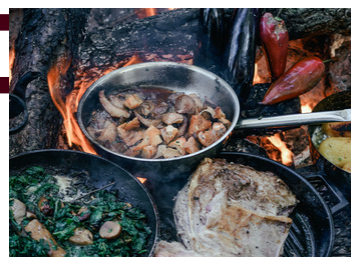
CHEF OF CHEFS

Your group will split into multiple teams. Each team will take on the challenge of preparing one of the courses the group will enjoy for lunch or dinner. Our culinary team will instruct the group as they go, ending the experience by eating what you've made!

Suggested Group Size: 15 or less

Price: \$74.00

Per Person Time Frame: 1 Hours



Pricing does not include applicable sales tax. Prices are subject to change without notice.



LOCAL ACTIVITIES

Racine is the ideal destination for teams seeking a blend of exploration, relaxation, and fun. Whether you're looking to immerse yourselves in the city's rich history, discover its hidden gems, or engage in exciting team-building challenges, Racine has something for everyone.

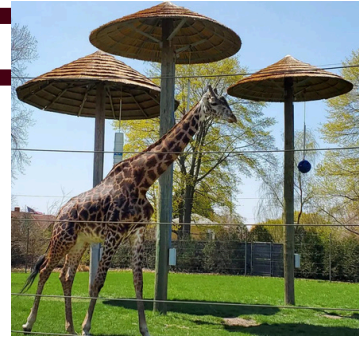
Our carefully curated menu showcases the very best of what Racine has to offer—along with dynamic team-building activities that will strengthen bonds and spark creativity!

Discover Racine's Hidden Treasures:

- **Historic Landmarks:** Explore iconic spots like the Wind Point Lighthouse, offering panoramic views of Lake Michigan, or delve into the Racine Art Museum for a dose of culture and inspiration.
- **Outdoor Adventures:** From nature walks along the Riverbend Trail to wildlife encounters at the Racine Zoo, the city offers a stunning backdrop for any outdoor activity.
- **Waterfront Wonders:** Whether it's a relaxing stroll along the shores or an exhilarating water activity, Racine's lakefront will leave your team feeling refreshed and connected.

Racine is more than just a city; it's an opportunity to bond, challenge, and inspire your team. Discover the best sights and activities, and take your team-building experience to the next level.





Racine Zoological Gardens:

No more than 3 miles down the road, nestled on the hill top of our lake front sits Racine's Zoological Gardens. Built in 1923 the Racine Zoo brings together history, architecture, and the beauty of the animals of the world

Contact and Location:

(262) 636-9189

2131 N Main St, Racine, WI 53402

Operating Hours and Admissions:

January 1, 2025 - May 23, 2025

10AM to 4PM, last paid admission at 3:30PM

May 24, 2025 – September 1, 2025

10AM to 5PM, last paid admission at 4:30PM

September 2, 2025 – April 4, 2026

10AM to 4PM, last paid admission at 3:30PM

Admission: \$11

Hot Shop Glass:

Located in the heart of downtown on our Monument Square is the Racine Art Museum. The Art Museum host multiple exhibits throughout the year, exploring different medias and celebrating the many great arisit that grew up here and those who inspired our community.

Contact and Location:

(262) 833-0095

239 Wisconsin Ave, Racine, WI 53403

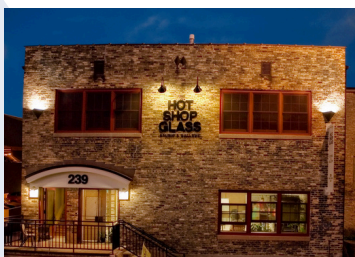
Operating Hours and Admissions:

Tuesday & Thursday 11am – 6pm

Wednesday, Friday & Saturday 9am-5pm.

Classes are held by reservation and can be booked on our website

Admission: Contact Business for Pricing



Racine Heritage Museum:

Racine Heritage Museum traces its origins to 1870, when early community builders organized the Old Settlers' Society to preserve the stories and experience of the settlement of Racine County. See the humbled beginnings and historic impact our city has had on not only our community but the world!

Contact and Location:

(262) 636-3926

701 Main St, Racine, WI 53403

Operating Hours and Admissions:

Tuesday - Friday 10 am to 5 pm

Saturday - 10 am to 3 pm

Sunday - 12 pm to 4 pm

Admission: Free



Racine Art Museum:

Located in the heart of downtown on our Monument Square is the Racine Art Museum. The Art Museum hosts multiple exhibits throughout the year, exploring different medias and celebrating the many great artists that grew up here and those who inspired our community.

Contact and Location:

(262) 638-8300

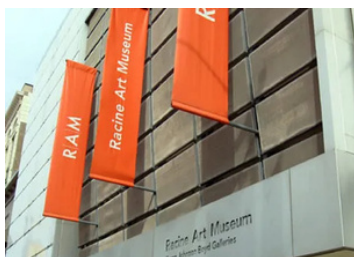
441 Main St, Racine, WI 53403

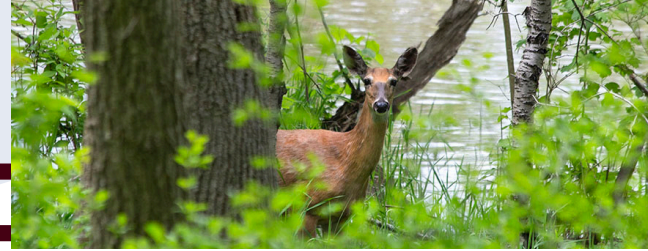
Operating Hours and Admissions:

Wednesday – Saturday

10:00 am – 4:00 pm

Admission: \$10





River Bend Nature Center

The silence of a tranquil, snowy wood, punctuated only by the swish of gliding skis, the delighted squeal of school children imagining what a deer looks like after seeing its tracks embedded in the soft mud, a forest awash in the glorious colors of autumn that frames the walk of solitary hikers, the gurgling sounds of the Root River as it rushes past a child and her mother sitting aside the bank, and the smell of syrup and the buttery taste of pancakes that celebrate the marvel of what maple trees produce — these are the sounds, sights and smells that have been part of the River Bend Nature Center experience for the citizens of Racine County since John F. Kennedy was President.

Contact and Location:

(262) 639-1515

3600 N Green Bay Rd, Racine, WI 53404

Operating Hours and Admissions:

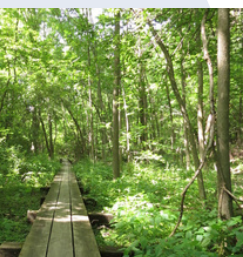
Grounds and trails are open from sunrise to sunset year round.

Weekday office hours 8am-4pm.

(During ski/snowshoe season and canoe/kayak season the buildings are open 9am to 5pm Saturdays and Sundays)

Admission: Free

(Contact for pricing on kayaks and snow gear)





SCJ Tours:

This tour is perfect for those who want a close, in-depth look at SC Johnson's inspired architecture as well as an understanding of the legendary partnership between third-generation company leader H.F. Johnson, Jr. and the renowned architect Frank Lloyd Wright.

The tour features the Frank Lloyd Wright-designed Administration Building (the second-floor mezzanine and the penthouse level are now included on weekends only) and the Research Tower, as well as Foster + Partners-designed Fortaleza Hall which includes the Timeline Tunnel, the SC Johnson Gallery: Furniture Done Wright and The Lily Pad gift shop to name a few of the locations:

Contact and Location:

Book a tour at: reservations.scjohnson.com

ECO Justice Center:

ECO Justice Center offers programming for lifelong learning as well as volunteer opportunities for those of all faiths, races and socio-economic backgrounds. You don't have to be signed up for an event to explore and experience the wonderful grounds at Eco-J. Bring the family for a picnic, explore our gardens, take a walk in the fresh-fallen snow. Beauty and community are everywhere at Eco-J. We provide a safe and welcoming outdoor space for all.

Contact and Location:

(262) 681-8527

7133 Michna Rd, Racine, WI 53402

